



Encl. 9-15
ONEIDA O-25



PLAY FAIRWAY ANALYSIS
OFFSHORE NOVA SCOTIA - CANADA
June 2011

Datum elevation: 25.9 m aMSL
X-coordinate: 616889.5
Y-coordinate: 4789287.2
TD (ft MD): 4120.0
Drilled in: 1970 (Shell)

Scale 1:4000
UWI: O-25 Well: ONEIDA O-25

Seismic Interpretation
based on reflectivity
(no reflectivity log
available for this well)

Petrophysical
Evaluation

Samples

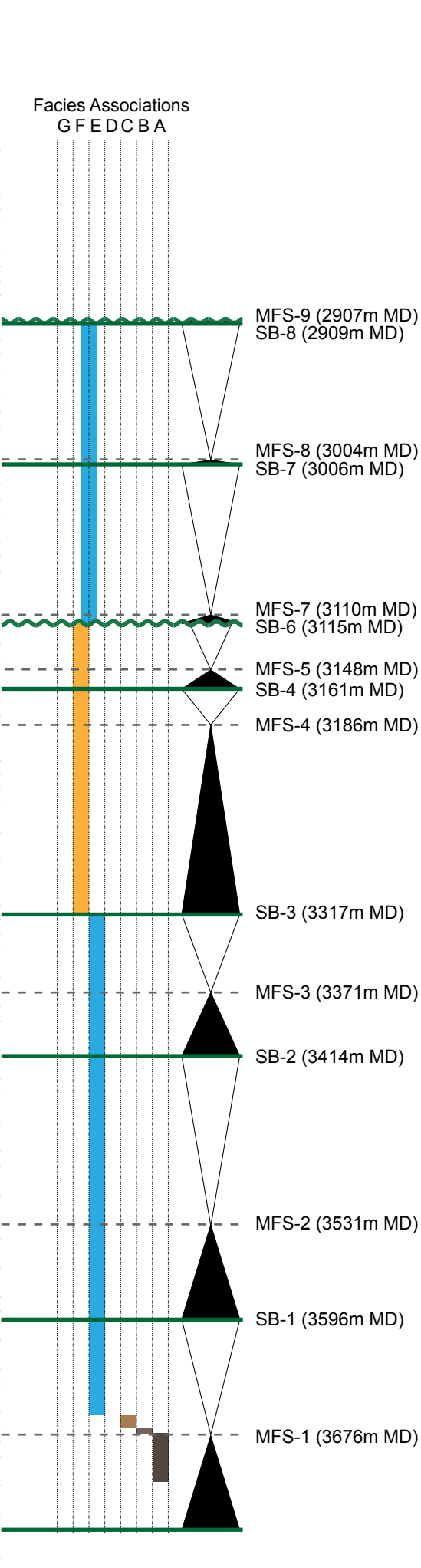
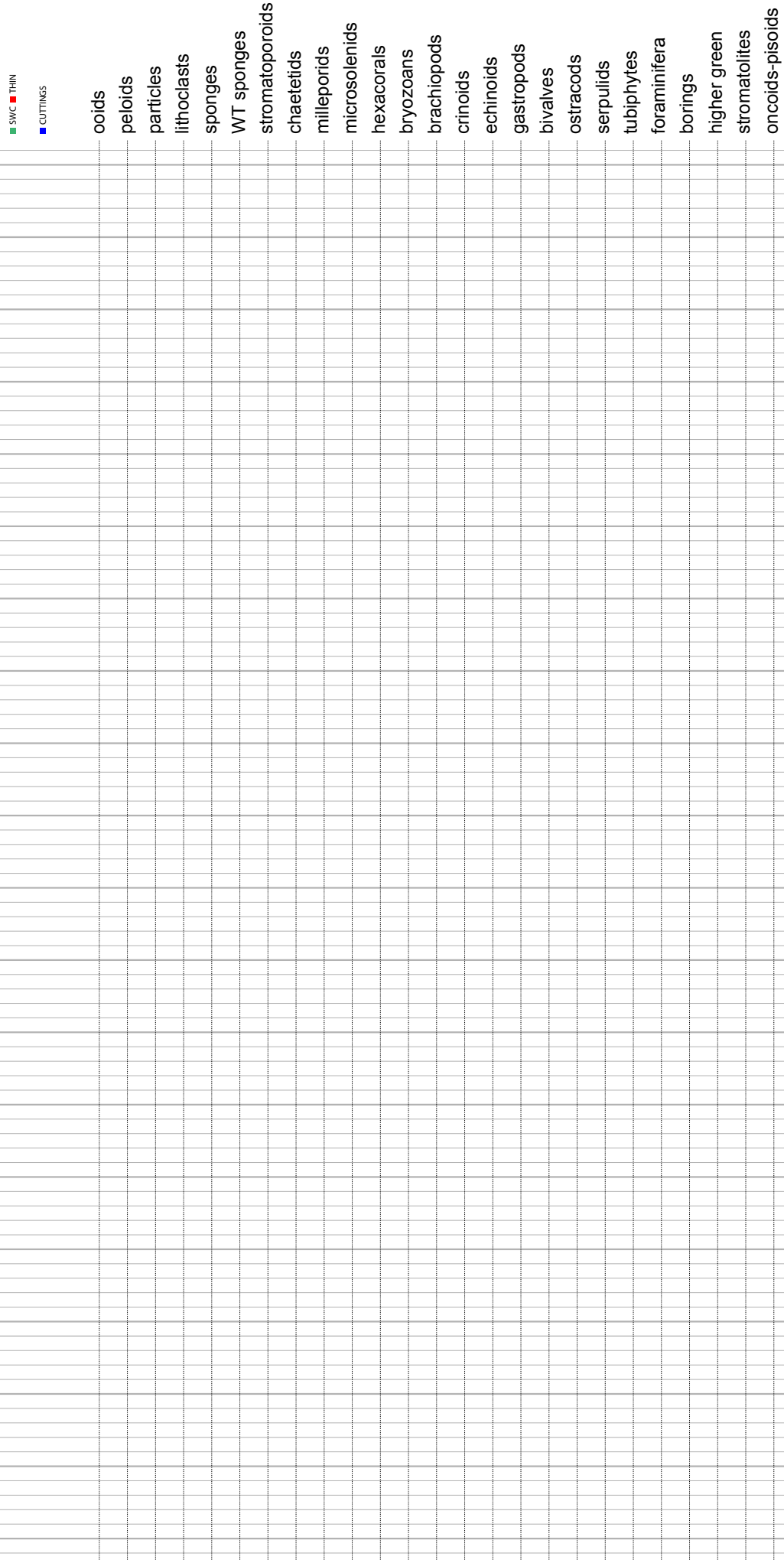
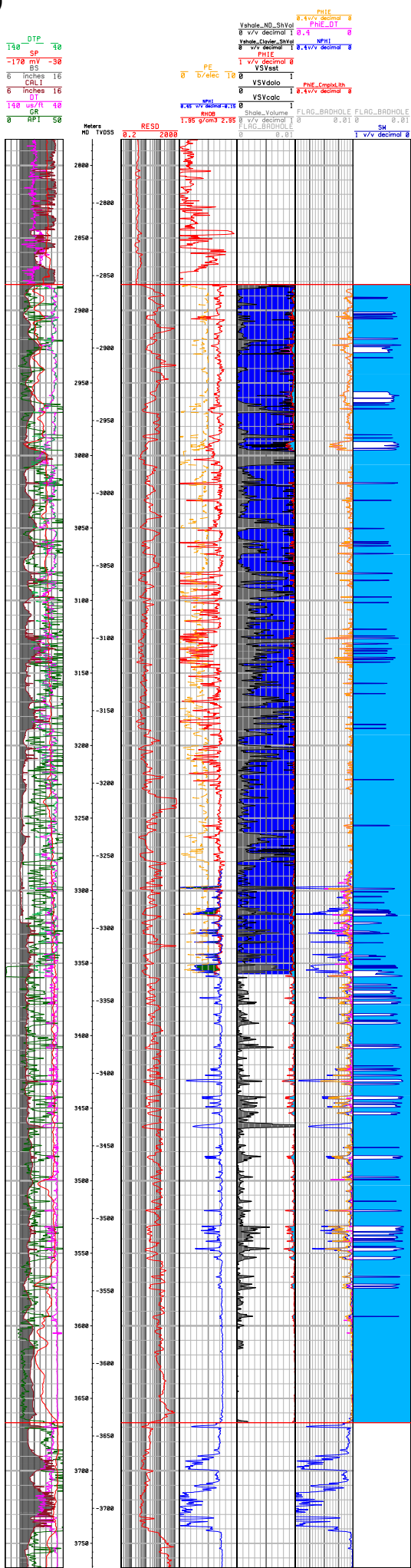
Sedimentological Data
(no quantitative chart available, see Eliuk, 1978 for descriptions)

Stratigraphic Breakdown

Seismic
horizon
J150

Seismic
horizon
Bac-4/3

Seismic
horizon
Bac-2/1



PETROPHYSICAL EVALUATION		FACIES ASSOCIATIONS	
	Sandstone		G1 - Shallow-water siliciclastics (delta to prodelta)
	Claystone		G2 - Muddy (lagoon) platform interior
	Limestone		F - Mixed carbonate-siliciclastic platform interior
	Dolomite		E - High-energy oolitic sand shoals
	Porosity		D - "Clear" shallow-water corallgal reef margin
			C1 - "Turbid" shallow-water sponge reef mounds
			C - Proximal foreslope
			B - Distal foreslope
			A - Deep marine shelf

SEQUENCE STRATIGRAPHIC BREAKDOWN	
MFS	Maximum Flooding Surface
SB	Sequence Boundary
MFS	Maximum Flooding Surface